

Range Management on Alberta's Public Land

"The summaries and their associated interpretations contained in this document are for general information only, not legal advice. To interpret or apply the law, you must consult the legally enforceable documents (Acts, Regulations, Agreements etc...). This information is provided 'as is', without representation or warranty. Neither the College of Alberta Professional Foresters nor the College of Alberta Professional Forest Technologists will be responsible for any loss or damage arising from your reliance on this information. These summaries and interpretations are provided for your personal or educational use; it cannot be reproduced for commercial distribution."

2016 Spring Information Session #2

Teresa Stokes, RPF

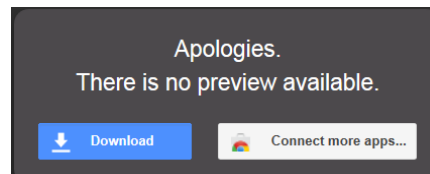
Senior Advisor, Land Allocation – Government of Alberta

Tel: (780) 422 5203

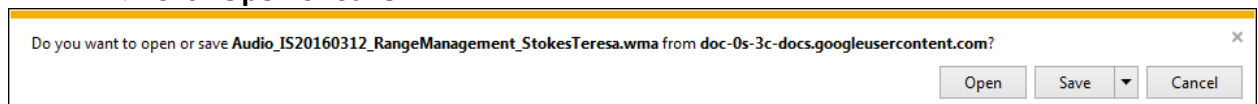
teresa.stokes@gov.ab.ca

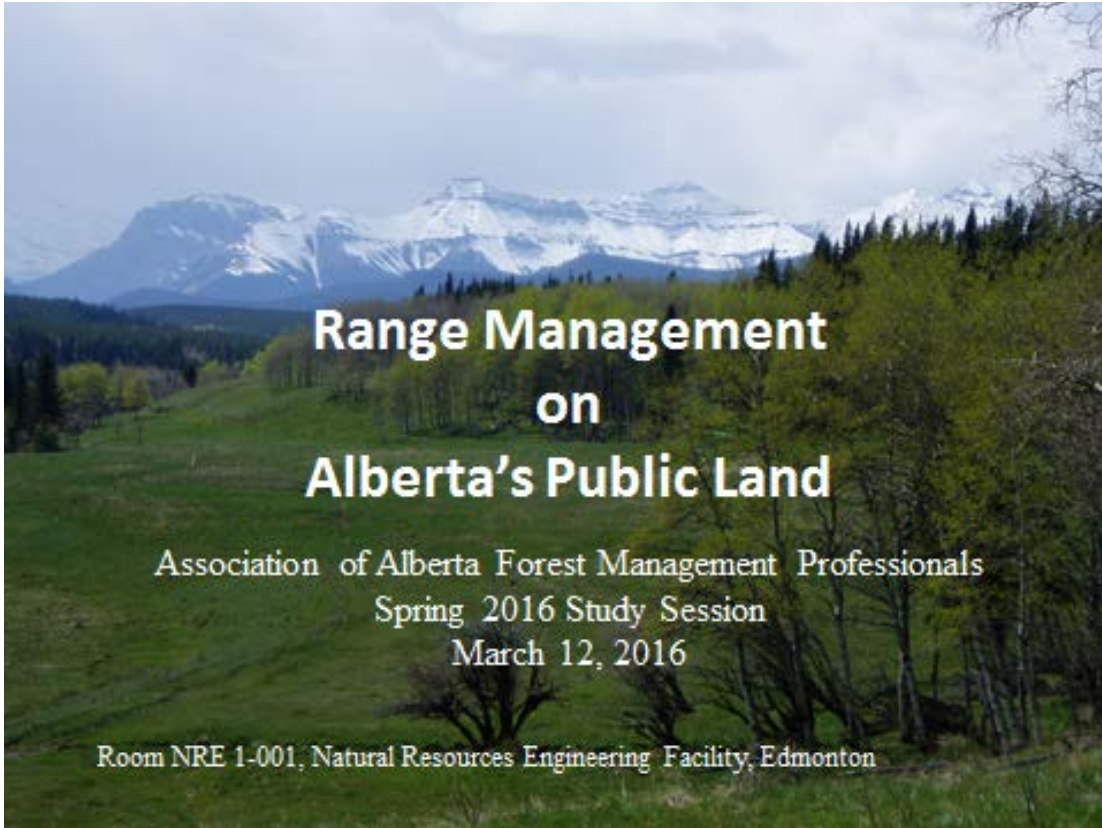
To listen to the presentation in Windows Media Audio format:

1. Click on [LINK to Google Drive](#)
2. Click **Download**



3. Click **Download anyway** if Google Drive can't scan for viruses (audio files are clean)
4. Click **Open** or **Save**





Alberta's Public Rangelands

- Over 6.6 million acres of rangeland in Alberta
- Located in both the White and Green Areas
- Includes native, modified and seeded plant communities where manipulated grazing is the principle form of management.
- Provincially provides supplemental forage for 25% of Alberta's beef cow herd.
- The associated public land supports a wide range of values and functions – timber, recreation, oil, gas, and wildlife habitat.

Rangeland Management

- Legislation governing rangeland management:
 - *Public Lands Act*
 - Public Lands Administration Regulation (PLAR)
 - *Forest Reserves Act*
 - Forest Reserves Regulation

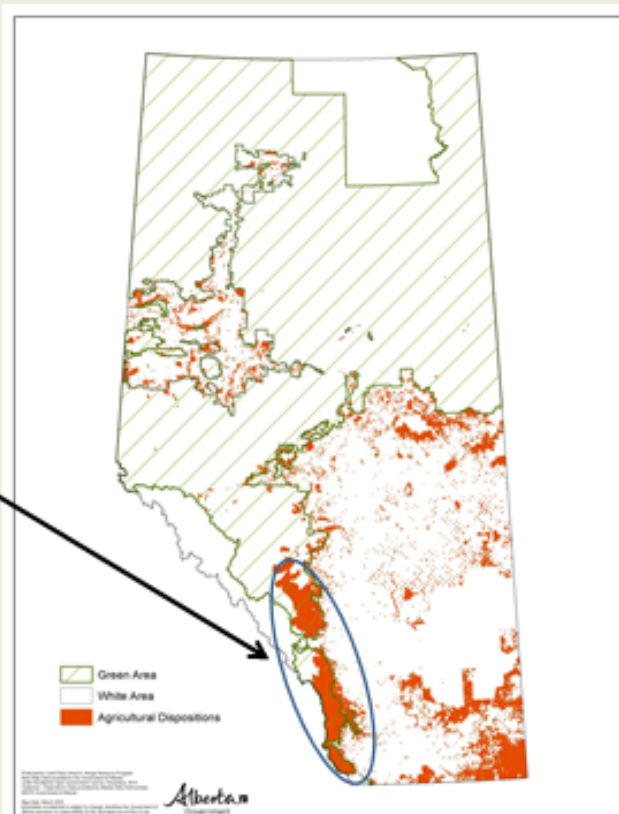
Public Lands Act

- Public Land Administration Regulation
- Part 3 Division 1 – Grazing Dispositions
 - Grazing Lease
 - Grazing License
 - Grazing Permit
 - Head Tax Permit



Agriculture Dispositions in Alberta

Rocky Mountain Forest Reserve



Type of Disposition	Differentiating point	Timber/Grazing
Grazing Lease (597 dispositions in the Green Area)	<ul style="list-style-type: none"> Long term tenure – up to 20 years Renewable 	<ul style="list-style-type: none"> Cannot restrict access for timber removal Must allow access for recreational purposes Grazing use is paramount Withdrawal from FMA Equal priority for access to resource
Grazing License (187 dispositions in the Green Area)	<ul style="list-style-type: none"> Grazing is secondary use – long term. Used mainly in green area – up to 10 years Renewable 	<ul style="list-style-type: none"> Grazing secondary use – have to allow other uses Cannot control public access Cannot restrict access for timber removal Can be issued on FMA without withdrawal (overlapping disposition)
Grazing Permit (49 dispositions in the Green Area)	<ul style="list-style-type: none"> Short-term – 1 year Renewable 	<ul style="list-style-type: none"> Must allow access for other uses Cannot restrict access for timber removal
Head Tax Grazing Permit	<ul style="list-style-type: none"> Short-term – 1 year Can be re-issued annually 	<ul style="list-style-type: none"> Cannot control public access Cannot restrict access for timber removal Usually issued on lands for temporary use (e.g. drought)

Rocky Mountain Forest Reserve

- The RM Forest Reserve was established for the conservation of forests and other vegetation and the maintenance of conditions favorable to optimal water supply.
- The *Forest Reserves Act* governs livestock grazing in the Rocky Mountain Forest Reserve.





Forest Reserves Regulation

- Divided into 91 allotments (not all allotments are being actively grazed).
- Each allotment may be further divided into several distribution units.
- Range management plans have been developed for each of the allotments. #AUMs, timing, integration with other uses

Forest Reserves Regulation

Type of Disposition	Differentiating point	Timber/Grazing
Regular Permit	<ul style="list-style-type: none"> • Graze the number of livestock assigned under a preference quota (AUM's) • Quotas range from 100-1000 AUMs • Permits issued for terms up to 10 years 	<ul style="list-style-type: none"> • Rights to the graze the number of AUM under the permit • Cannot restrict public access • Cannot restrict access for timber removal.
Temporary Permit	<ul style="list-style-type: none"> • Graze livestock on surplus range • Issued for terms up to 5 years. 	<ul style="list-style-type: none"> • Rights to the graze the number of AUM under the permit • Cannot restrict public access • Cannot restrict access for timber removal.

Grazing and Timber Integration Policy

- Overlapping tenure of two resources on the same land base.
- Potential for significant impact on one or both operations.
- Issues kept being raised to government.
- Policy puts onus back on the two parties to work it out.

Grazing and Timber Integration Policy

- To ensure the proper coordination of the resource use a policy and manual were developed.
 - Integration of Grazing and Timber Activities (External Directive)
 - Grazing and Timber Integration Manual
- One of the main principles is to ensure the effective communication between both parties operating on the same land base.
- Recognizing there may be some disagreements a **dispute resolution process** was also included.

Government of Alberta Home | Contact Government | Ministries

Alberta Environment and Parks

Home News About Us Air Climate Change Fish & Wildlife Forms, Maps, Services Lands & Forests Recreation & Public U

Lands & Forests Grazing & Range Management Grazing & Timber Integration

Alberta Land Trust Grant Program
Alberta Public Lands Appeal Board
A Vision for Canada's Forests
Director of Surveys
First Nations Consultation
Forest Business
Forest Harvest Operations
Forest Health and Adaptation
Forest Management
Grazing & Range Management
Grazing Lease Stewardship Code of Practice
Grazing & Timber Integration
Range Health
Range Plant Community Guides & Stocking Rates
Range Stewardship
Riparian Areas

Grazing & Timber Integration

Alberta's Grazing and Timber Integration Policy and Manual

The purpose of the new policy and manual is to provide direction to government and industry regarding grazing and timber disposition activities on Green area public land, and White area public lands in the yield of timber and forage.

A number of regional grazing planning, grazing management agreement, and monitoring tools are

Policy and Manual

Access the integration of Grazing and Timber Activities – SO 2011-03 Land Directive at:

- Forestry Directives & SOPs
- Grazing and Timber Integration Manual - Apr 15, 2011 (44 pages, <1 MB)

Regional Grazing Plans

- Whitecourt-Edson Regional Grazing Plan - Nov 2007 (139 pages, 8.5 MB)

Grazing Timber Agreements

- Grazing Timber Agreement (GTA) - Nov 1, 2007 (4 pages, <1 MB)
- Checklist for Completing a Grazing Timber Agreement (GTA) - Jan 4, 2008 (2 pages, <1 MB)

Grazing and Timber Integration Policy

External Directive

Integration of Grazing and Timber Activities	Lands Division Range Management Branch
Staff Directive 2011.03	June 2006 (Updated: April 18, 2011)

Purpose
To provide direction to government and industry regarding the integration of grazing and timber disposition activities on Green area public land, and White area public lands managed by the combined staff of timber and forage Policy divisions within the lands management and care departments and within the requirements for planning, operations, agreements, monitoring, and dispute resolution. The existing directive, in a transition period that considers the requirements of former operations is deleted.

Policy
Grazing operations will be allowed on Green area public land as follows to ensure that sustainable ecosystem grazing, timber harvest, silviculture, and other resource uses and values. The following provisions and a Grazing Timber Agreement (GTA) (see manual) will be required to ensure the successful integration based on current knowledge and experience in Alberta.

Grazing and timber operations shall occur on all unencumbered grazing and timber dispositions. A regional grazing planning process will occur to address grazing and timber activities in a landscape scale to allow for resource integration efforts for co-managing all existing dispositions on wilderness planning, and to provide for the issuance of new grazing dispositions. For both existing and future unencumbered dispositions, a grazing timber agreement regarding both timber and grazing operations will occur with 'operational' integration.

Grazing dispositions that are subject to approval will be reviewed in the new disposition type. For example, a lease will be required to a lease, and a license required to a license.

Current grazing is requiring conditions on existing dispositions can continue if no more are issued in the department, a Grazing Timber Agreement is required to continue for dispositions held.

This policy will be reviewed by the department after five years of implementation, and then as required, to address developments in the sector.

Appendix 1: Contents of Disposition including for grazing and timber integration framework.

Procedure

- Regional Grazing Plans (RGPs) will be developed in areas of high grazing demand with environmental changes or regions where high levels of timber integration are required, as determined by the department. Plans will provide the allocation of care grazing dispositions, which include addressing the needs of existing grazing dispositions holders to such regions. In regions where the Plans are developed in scenarios, but all grazing has been allocated, a modified Regional Grazing Planning process will need to be developed (see manual) to be implemented in the manual. Where the Plans are not developed in areas of high demand, the grazing application process will follow business as usual for regional planning, as well as the

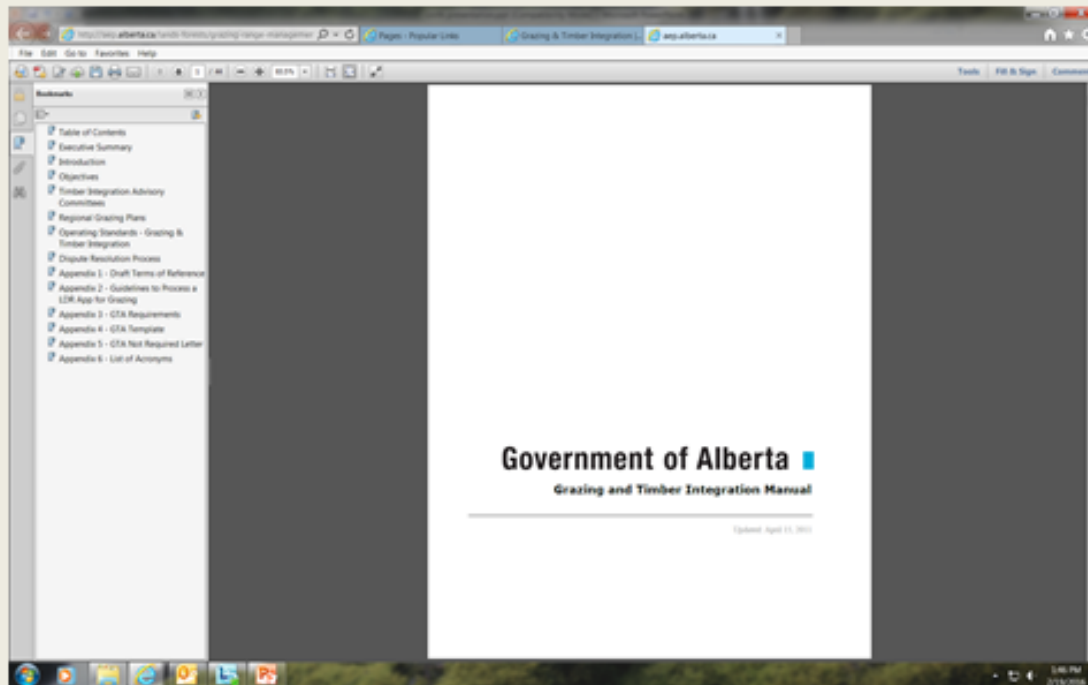
Integration of Grazing and Timber Activities (External Directive)

- Purpose – to provide direction to government and industry regarding integration of grazing and timber disposition activities on Green Area and White area public land managed for sustained yield of timber and forage.
- It outlines what you need to consider
 - Procedure 6. Grazing Timber Agreements (GTA)

Integration of Grazing and Timber Activities (External Directive)

- Grazing Timber Agreement
 - Will be developed for overlapping grazing and timber dispositions **except** with overlapping existing dispositions where none concerns exist.
 - If no concerns between two parties the government would still like written confirmation.
 - Agreement between two parties.
 - Develop strategies – e.g. regeneration, fence clearing, deferring grazing etc.
 - Endorsed by government – reviewed to ensure aligns with legislation.

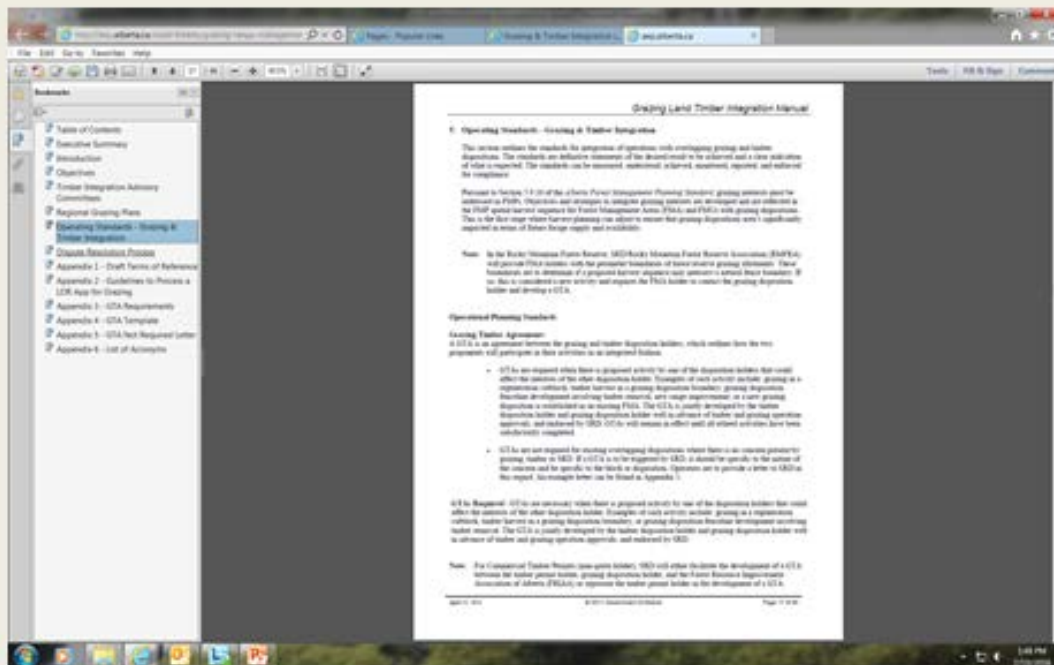
Grazing and Timber Integration Manual



Objectives to integration of grazing and timber operations

- Minimize impact of timber harvest and silviculture operations on infrastructure and carrying capacity of rangelands for domestic livestock grazing.
- Minimize impact of grazing operations on regeneration per regeneration standards in Alberta and maintenance of site productivity for timber supply.
- Minimize the impact of overlapping grazing and timber operations on other resource values and uses.

Grazing and Timber Integration Manual



GTA Requirement

- Objective
- Contact Information
- Grazing & Timber Strategies & Mitigation Measures
- Communication & Dispute Resolution Procedures
- Monitoring Procedures
- Endorsement – by both operators and AEP

Further Information

- <http://aep.alberta.ca/lands-forests/grazing-range-management/grazing-timber-integration.aspx>
- Rob Kessler – rob.kessler@gov.ab.ca
- Teresa Stokes – teresa.stokes@gov.ab.ca

