
Operating Ground Rules

“The summaries and their associated interpretations contained in this document are for general information only, not legal advice. To interpret or apply the law, you must consult the legally enforceable documents (Acts, Regulations, Agreements etc...). This information is provided ‘as is’, without representation or warranty. Neither the College of Alberta Professional Foresters nor the College of Alberta Professional Forest Technologists will be responsible for any loss or damage arising from your reliance on this information. These summaries and interpretations are provided for your personal or educational use; it cannot be reproduced for commercial distribution.”

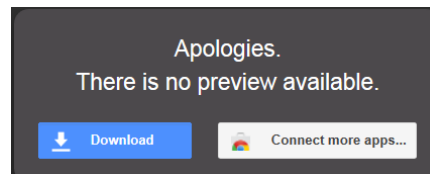
2016 Spring Information Session #2

Heath Schneider, RPFT
Instructor – NAIT

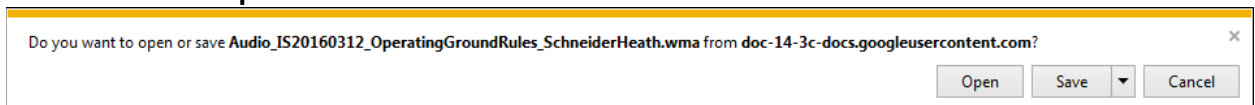
heaths@nait.ca

To listen to the presentation in Windows Media Audio format:

1. Click on [LINK to Google Drive](#)
2. Click **Download**



3. Click **Download anyway** if Google Drive can't scan for viruses (audio files are clean)
4. Click **Open or Save**



FORT2450

OGR Assessment

Note:

- This exercise is based on the [Weyerhaeuser-Pembina OGR \(2011\)](#)
- Answer questions in **complete** sentences unless otherwise noted.
- **List the Section, Subsection, Clause, Sub-clause, Paragraph, Subparagraph and page number.**
- ***You may quote text verbatim unless specified.***

1. What is the “Scope” of the OGR?

2. What are the main components of the planning process? ***(Point Form)***

3. Define a Final Harvest Plan (FHP), its scope, duration.

4. List ***three*** items that must be on the ***FHP map***. ***(Point form)***

5. What is the purpose of an Annual Operating Plan (AOP)?

6. What is the submission date for an AOP? What has to be submitted? ***(Point form)***

7. Explain, in your own words, the tree utilization standards. Give one example.

8. List all of the utilization standards that apply for both coniferous and deciduous timber. **(Point form)**

9. Explain how watercourses are classified as per the ground rules.

10. Explain the differences between an “Intermittent” and “Transitional Small Permanent” watercourse classes.

11. What size of buffer does a lake with the following characteristics receive?

Area: 4.7, no recreation value or seasonal waterfowl population.

12. As per the “Weyerhaeuser – Pembina Timber Harvest Planning and Operational Ground Rules” the required protective buffer size for a small permanent watercourse is:

13. As per the “Weyerhaeuser – Pembina Timber Harvest Planning and Operational Ground Rules” the required protective buffer size for an intermittent watercourse is:

14. What is the allowable size for a **Spruce dominant** cutblock? Is there an exception? Explain.

15. List the Retention targets for the Weyerhaeuser FMA for **each** FMU.
(Point Form)

16. What are the three principal wildlife species or species groups that have specific management rules in the OGR?
(Point Form)

17. What is the timeline to start reforestation activities on a harvested area?

18. What is the maximum ground disturbance allowed in a harvested area, without prior approval?

19. What are **three** characteristics of a Class IV road? **(Point Form)**

20. What are the approved crossing structures for a Small Permanent watercourse during frozen conditions? **(Point Form)**
(5)