
Alberta Operating Ground Rules

“The summaries and their associated interpretations contained in this document are for general information only, not legal advice. To interpret or apply the law, you must consult the legally enforceable documents (Acts, Regulations, Agreements etc...). This information is provided ‘as is’, without representation or warranty. The College of Alberta Professional Foresters will not be responsible for any loss or damage arising from your reliance on this information. These summaries and interpretations are provided for your personal or educational use; it cannot be reproduced for commercial distribution.”

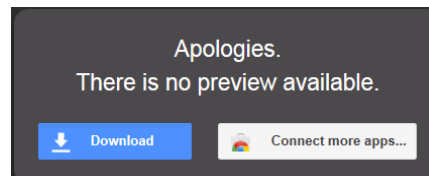
2015 Spring Study Session for the CAPF Professional Exam

Topic	Learning Module	Audio (See instructions below)	Speaker
Alberta Operating Ground Rules	TM	WMA Audio	Darren Fearon Tel: (780) 644-3135 darren.fearon@gov.ab.ca

NOTE: To listen to the presentations in Windows Media Audio format:

1. Click on [WMA Audio](#)

2. Click **Download**



3. Click **Download anyway** if Google Drive can't scan for viruses (audio files are clean)

4. Click **Open** or **Save**

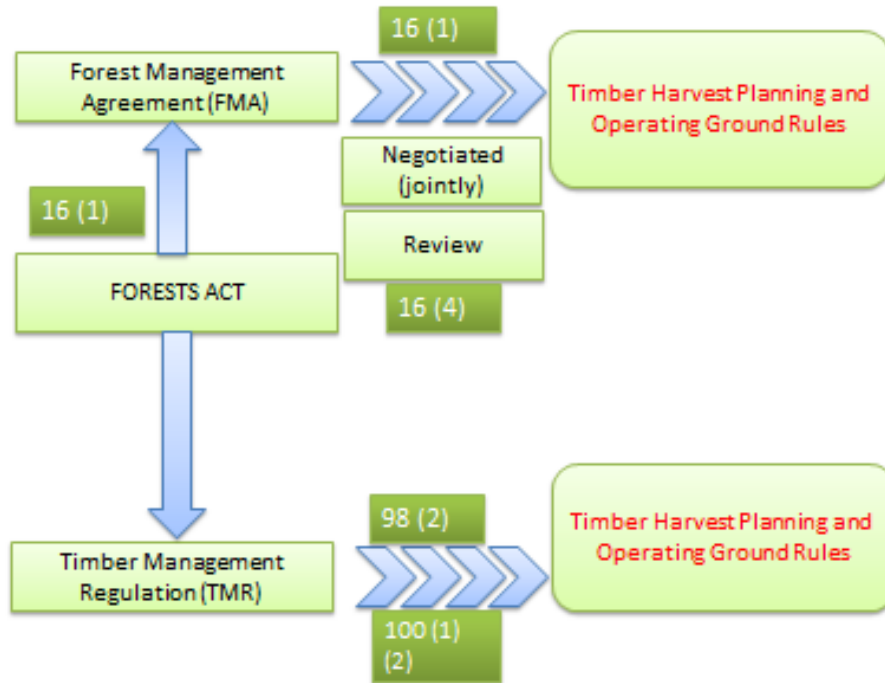


Alberta Operating Ground Rules

CAPF Study Session
March 7, 2015

Darren Fearon, RPF
Alberta Environment and Sustainable Resource
Development

Legislative Hierarchy



OGR Regular Reviews

- **Annual reviews initiated by industry or ESRD**
 - For significant changes to:
 - POLICY
 - LEGISLATION
 - MANAGEMENT OBJECTIVES (FMP)
 - SAR

Planning Hierarchy



4

Relationship to FMP

- **OGRs operationalize many FMP components:**
 - Spatial Harvest Sequence
 - Long term road network
 - Silviculture Matrix
 - Utilization
 - Structure Retention
- **They provide the “how, where and when”.**
- **Current direction is for ground rules to be developed simultaneously with the FMP.**

5

Relationship to FMP *cont'd*

- **Ground rules can also affect the landbase available for management in the FMP (Timber Supply Analysis)**
- **Features requiring buffers under ground rules are ‘subjectively deleted’ from forest management landbase**
 - Stream/lake buffer requirements
 - Recreation area buffers
 - Mineral lick/ bear den buffers

6

Alberta Operating Ground Rules

Planning
Standard
(VOIT)

- 6.4 *Spatial Harvest Sequence* developed
- Objective 1.1.1.1 Maintain biodiversity

FMP

- Approved SHS

OGR

- Forest Harvest Plan (FHP)
 - Plan requirements for complying with approved SHS
 - Deletions <20%
 - Harvest area cannot exceed 100% of SHS area

7

Alberta Operating Ground Rules

Planning Standard (VOIT)

- Objective 1.1.2.1 Retain stand level structure

FMP

FMP example:

Target: a) A combination of single stems, clumps, and islands comprising between 0% and 3% of the harvest area with an average of 1% over the entire FMA.*

OGR

- Example next page

8

EXAMPLE OGR

S16, S17 and S20

- 7.4.1 A minimum of 1 percent (1%) representative merchantable coniferous and deciduous volume shall be retained at a landscape level as per the management plan.
- 7.4.2 Not all harvest areas shall require structure retention.
- 7.4.3 Buffers left on sensitive sites as per 7.7.6 can be included as structure retention.
- 7.4.4 Blocks greater than 100 ha shall have increased structure while smaller blocks will have less.
- 7.4.5 Areas of non-merchantable timber or shrub areas greater than 1 ha shall be left.
- 7.4.6 For FMU S16, S17 and S20 structure retention shall be monitored and reported by the company utilizing the process from the approved FMP.
- 7.4.7 The companies shall provide the volume retained from their operations to the affected company.
- 7.4.8 Stand structure monitoring results will also be collected by the FMA holder for all operators in the FMA, tracked annually and reported every five years in the FMA stewardship report.

9

Alberta Operating Ground Rules

Planning Standard (VOIT)

- Objective 3.1.1.1 Minimize impact of roading and bared areas in forest operations

FMP

FMP example:

Target: Potentially lower productive landbase created by Timber harvesting operations shall not exceed 3% of each harvest area. Potentially lower productive landbase may be created by Unreclaimed temporary roads, rutting, bared landing areas, Displaced soil and (unburned) debris piles*

OGR

- Example next page

10

EXAMPLE OGR

GROUND RULES

Pre-harvest planning

- 9.0.1 Areas susceptible to rutting, puddling or compaction shall be avoided when planning temporary roads, decks, landings and skidding patterns.
- 9.0.2 Areas susceptible to rutting, puddling or compaction shall be harvested during dry or frozen conditions (e.g. harvest areas with predominantly imperfectly-poorly drained soils).

Harvesting

- 9.0.3 The total area covered by temporary roads, rutting, bared landing areas and displaced soil created by timber harvesting operations shall not exceed five percent of each harvest area without prior approval of Alberta or that allowed in 2.5.5.
- 9.0.4 Operations shall not occur during heavy rainfall or when soil conditions are above field capacity (saturated).
- 9.0.5 Minimize the machine traffic on sensitive areas, depending on soil susceptibility to disturbance.
- 9.0.6 Operations shall cease when instances of multiple ruts in a limited area are created that are clearly related to operations during unfavourable ground conditions.
- 9.0.7 Erosion and soil disturbance must be limited, with effort made to retain organic matter and soil nutrients.

Post-harvest reclamation/reforestation

- 9.0.8 Site preparation creating linear disturbance patterns shall be oriented to minimize channelling of water downslope and to ensure sediment is not directly entering water courses.
- 9.0.9 Roads within harvest areas that are no longer required shall be reclaimed and reforested. Treatments acceptable to Alberta are required on compacted soils. Acceptable treatments may be decompaction if required, roll back of debris, and planting.

11

Framework

Introduction

1.0 + 2.0

Planning

3.0 – Planning

- Approvals
- Plan Requirements
- Timing

12

Framework *cont'd*

Operational

4.0 – Utilization

- Stand (variance)
- Tree



5.0 – Integration w/other users

- Dispute resolution

6.0 – Watercourses

- Watercourse classification
- Standards & guidelines for operating beside

13

Framework *cont'd*



7.0 – Wildlife/Habitat

- Harvest area design & layout
- Debris management & wildfire prevention
- Structure retention
- Understorey management
- Species of special concern (e.g. caribou, grizzly bear, trumpeter swan)



14

Framework *cont'd*



8.0 – Silviculture

- Reforestation
- Silviculture operations (e.g., site prep, herbicide)

9.0 – Soils

- Soil protection
- Limit on disturbance (5%)
- Weather & seasonal considerations

10.0 - Forest Health/Weeds

15

Framework *cont'd*

11.0 - Roads/Xing's

- Classification
- Construction, maintenance & reclamation
- Watercourse crossings
- Access control
- Camps & facilities

12.0 - Reporting

- Silviculture
- Inspections
- As-built details



16

Operational Plan Requirements: *Annual Operating Plan (AOP)

- **Annually authorize all road, harvest and forest management activities for the operator.**
- **Approval required prior to operations.**

Includes:

- **Reforestation program (aka Silviculture AOP)**
- **Fire Control Plan**
- **Road Plan**
- **Forest Harvest Plan(s) (FHP)***
- **General Development Plan (GDP)***

17

Operational Plan Requirements: *Forest Harvest Plan (FHP)

- Map
 - Harvest area boundaries, roads (incl. temporary)
 - Stream classifications
 - Water crossings
 - Block-level SHS variance
-
- Valid for 5 years from approval

18

Operational Plan Requirements: General Development Plan (GDP)

- Project activities for the next 5 years
- Guides integration with other users
- Schedules timber disposition admin activities
- Predicts cut control status and SHS variance
- Coordinates development and reclamation of roads
- As-builts from previous year

19

QUESTIONS?

darren.fearon@gov.ab.ca

780-644-3135